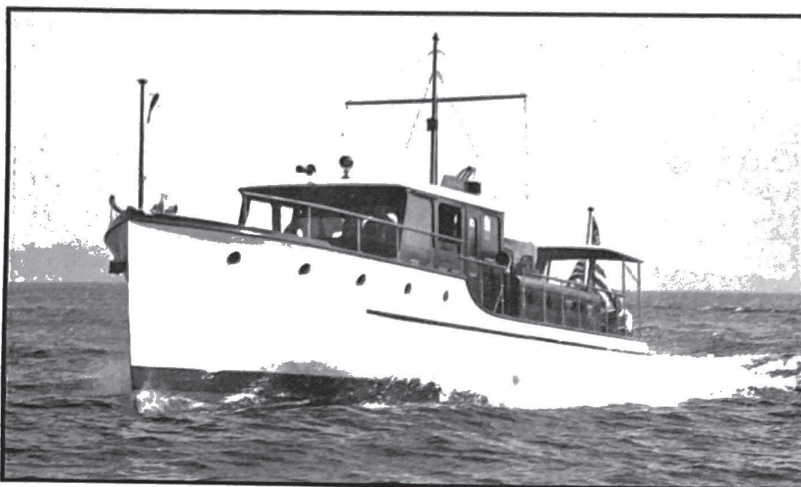


# King Vidor Buys Express Cruiser



"Runaway" Is a Modern Express Cruiser of Striking Appearance

**K**ING VIDOR, well known motion picture director of Hollywood, California, purchased in May from Lake Union Drydock Company of Seattle, one of the firm's trim and modern lined "Dream Boats", a 52-foot twin screw cruiser. Vidor christened the craft *Runaway*, and shortly afterwards left for British Columbia waters, with his beautiful wife, the Eleanor Boardman of motion picture fame, also. Accompanying the party was Matt Moore, another film luminary.

*Runaway*, illustrated herewith, is a Geary designed ship of round bilge type, and shows a neat and pleasing appearance. Her bow wave at cruising speed is relatively low, and the ship logs good speeds without lifting her bow excessively. *Runaway's* outboard profile is worthy of study. The bow is straight, with a slight cutaway at the forefoot, the stern is a rounded transom, and the raised and main sheers are streamlined and practically straight—accepted style for this type of boat. The pilot house front is raked and given an attractive curved effect. The crown of the wheelhouse is generous, also. A military mast tops off the trunk cabin, over the latter being a 10-foot dinghy. The cockpit aft is protected ahead by a permanent windshield which carries out the fast appearance. The cockpit is protected overhead, as shown.

*Runaway* is double planked, with  $\frac{3}{8}$ " red cedar diagonally laid inside, while the outside course is of  $\frac{3}{4}$ " Alaska cedar. Frames are  $1\frac{1}{4}$ "

square, of bent oak spaced on 10" centers. Her hull measures 52 feet in length, 12 $\frac{1}{2}$  feet in breadth, and approximately 3 $\frac{1}{2}$  feet in draft. The inside and outside finish and trim are of teak, and combined with an ivory white paint finish inside the cabins, makes a mighty attractive ship, everything considered. The pilot house shows generous use of teak, and is an example of splendid ship carpentry.

Two six cylinder Kermath marine engines, each capable of developing 158 h.p. at 1,800 r.p.m., give *Runaway* a top speed of approximately 20 m.p.h., when the twin Coolidge propellers of 19"x15" dimensions are whirled up to the engines' rated r.p.m.'s. The tail shafts are of Tobin bronze.

*Runaway* has an interesting arrangement. Forward is a small stateroom for the captain, this compartment having a private water closet, a berth, a seat and shelves. Ahead of this stateroom is a chain locker. Next, going aft, is a stateroom, there being a double berth on the port side, and a single to starboard, with drawers underneath both. Just ahead of the stateroom is a bath, with water closet and wash bowl, and a linen locker. The forward stateroom has a mirrored bureau on the aft end, on the ship's centerline, and to starboard of it, a companionway leads upward to the wheelhouse. The latter named compartment is perhaps the "show" place of the entire boat. The steering wheel, executed in beautiful

Right: King Vidor on location during the taking of one of his pictures. (Vidor is a director).



hardwood, is just to port of the ship's centerline, and on the shelf forward of the wheel, are complete engine controls, including two custom made control units finished in chromium plate, which handle the reverse gears, gasoline throttles and spark adjustments. The finish is beautifully done in teak, and mohair settees, both port and starboard of the companionway which leads aft, contribute greatly to the pleasing appearance of *Runaway's* pilot house.

Stepping down the companionway to the galley, one finds the finish and equipment here in harmony with the richness and beauty of the remainder of the boat. A Spark range, burning natural gas; an electric refrigerator, and the usual galley equipment are found here. To starboard is the toilet, and the pressure water system.

A step aft takes one into the main cabin, with its mohair settee-berths both starboard and port, and a teak table of the drop-leaf type, on the ship's centerline. This cabin is lighted with a series of ports and windows and a companionway, during daytime. Aft is the comfortable cockpit, with its leather upholstered seats across the aft end. Mohair upholstered wicker furniture is found in the cockpit, also. The transom is planked with teak and finished natural, further contributing to *Runaway's* beauty. The after cabin has rugs covering all floors, this item, combined with others, tending to give the cabin a home-like appearance.

Equipment found aboard *Runaway* includes the following: Cunningham cruiser type air whistle, Lux fire extinguishing equipment, National Poweray searchlight, Dayton marine hardware, Lee Bennett electric anchor windlass, Ritchie compass, Pyrene hand fire extinguishers, Oberdorfer automatic bilge pump, Autopulse gasoline pump units, Maxim silencers, an 800-watt electric generating unit, A-C flame arresters on the carburetors, National custom built marine batteries, and electric ventilator units for both the engine room and the galley.